



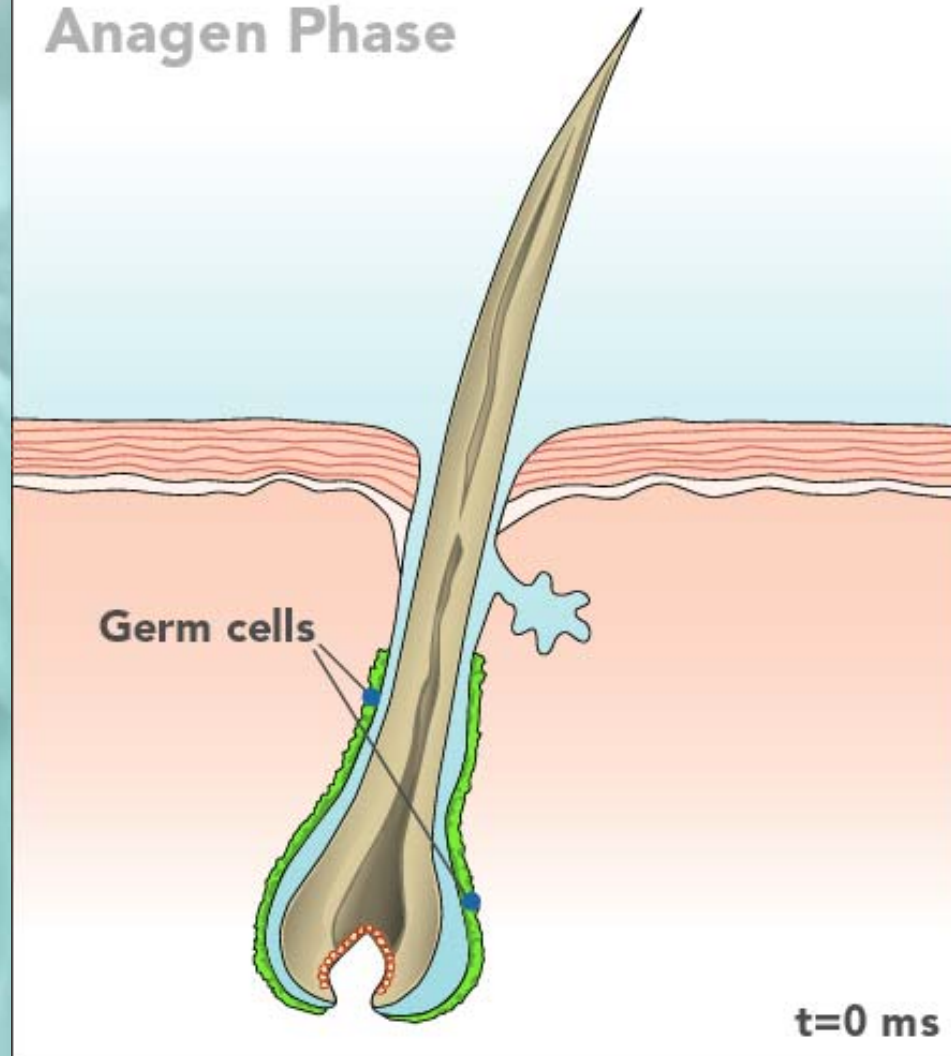
PLASMALITE.®

## The Process of Hair removal

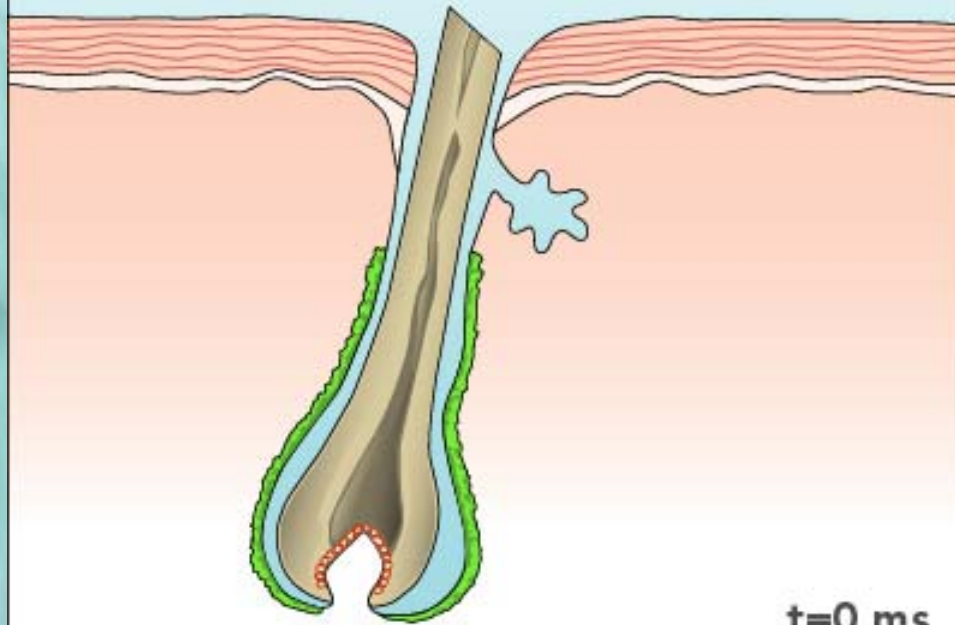


PLASMALITE

## Anagen Phase

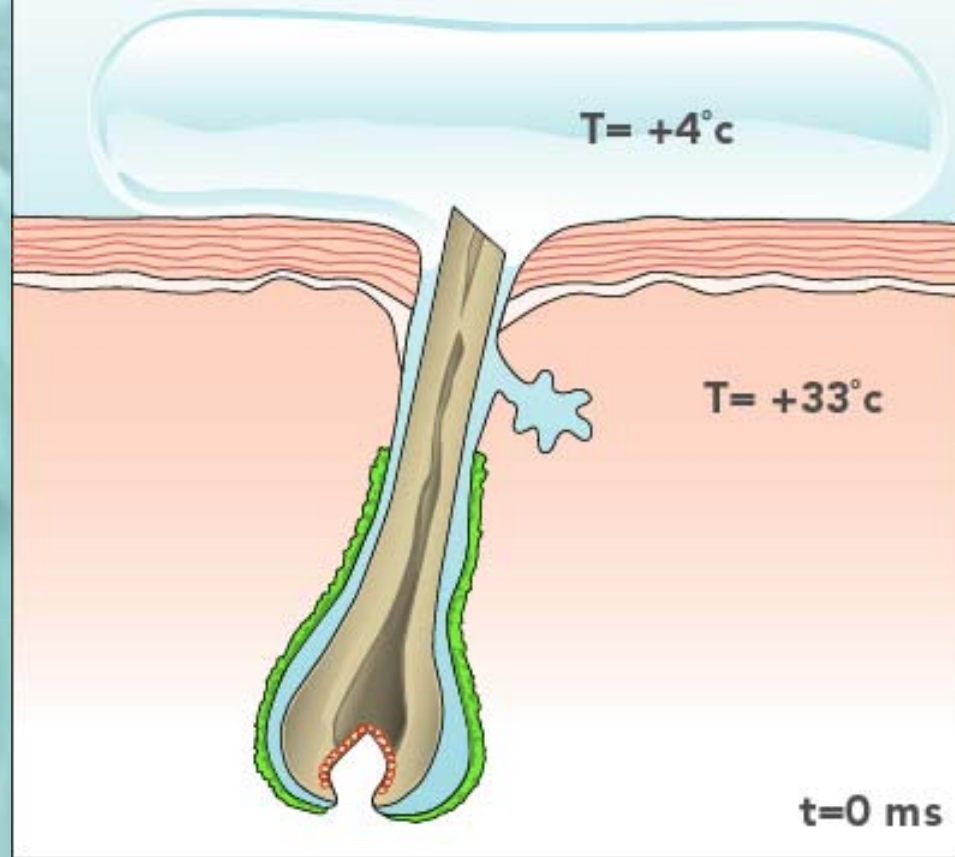


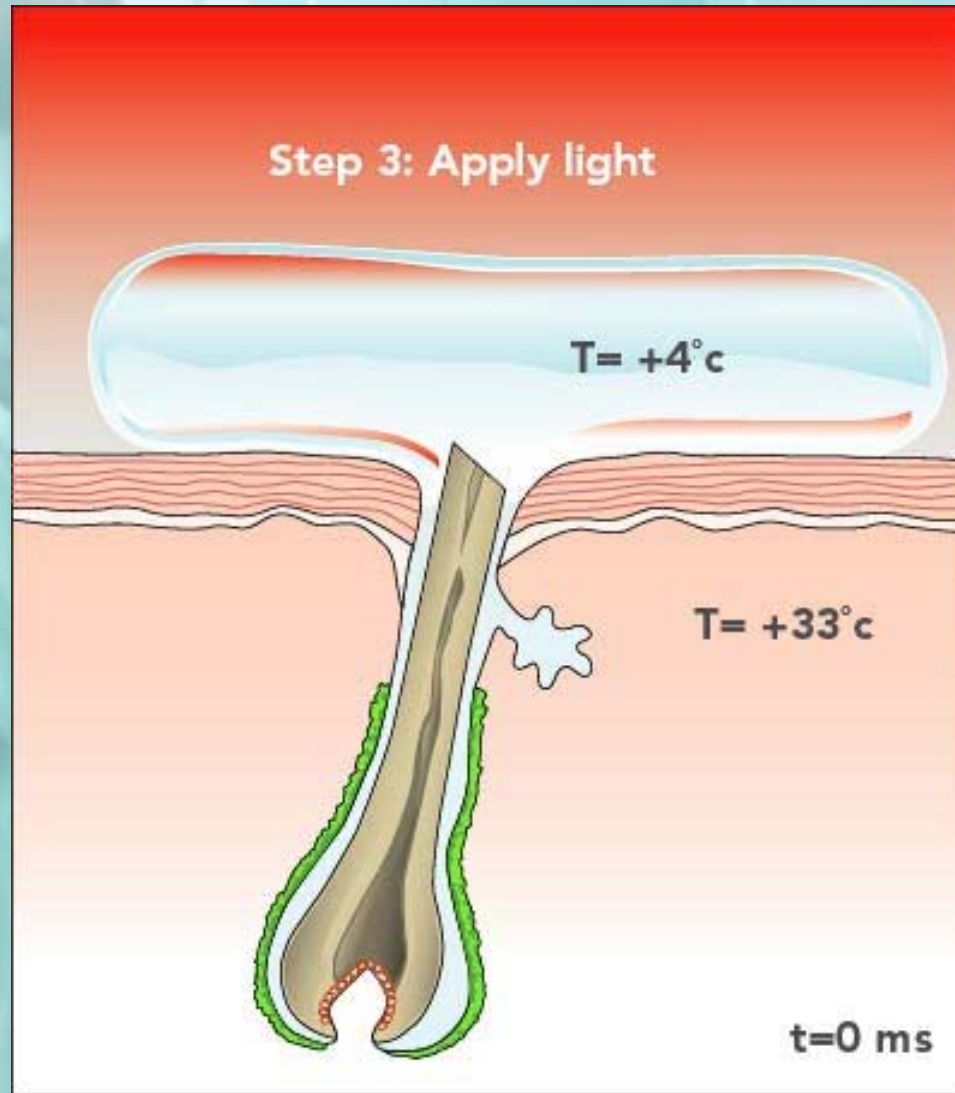
Step 1: Shave hair



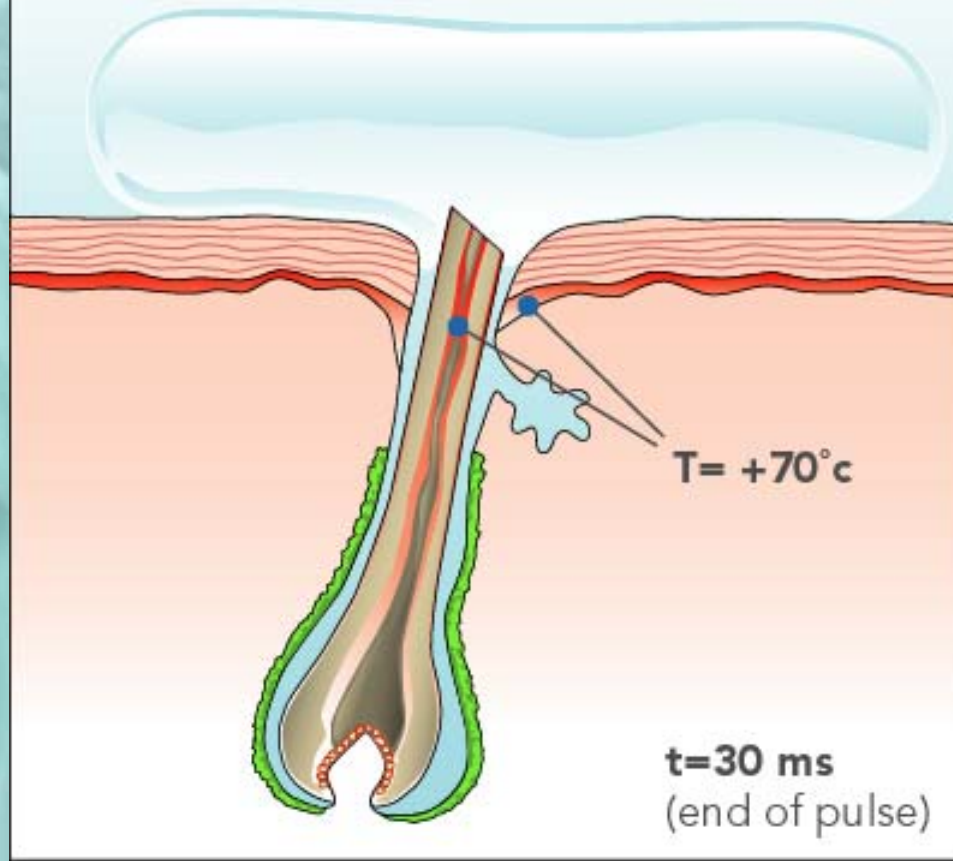
$t=0$  ms

**Step 2: Apply cold gel**



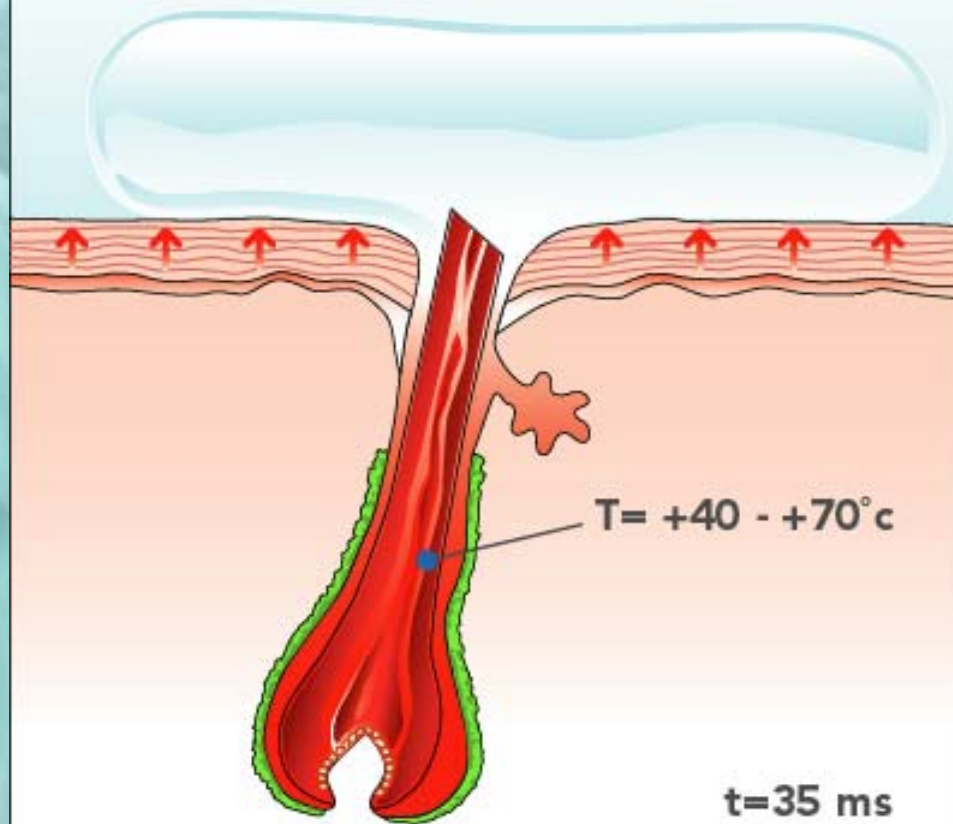


#### Step 4: Temperature rises

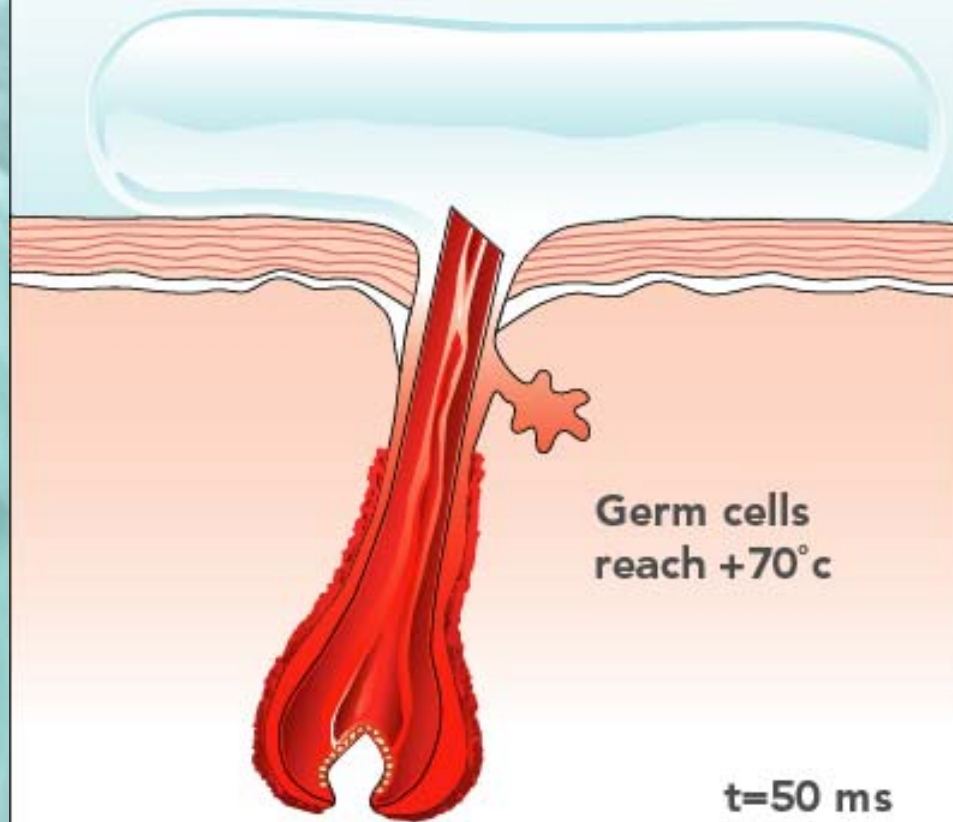




### Step 5: Epidermis cools

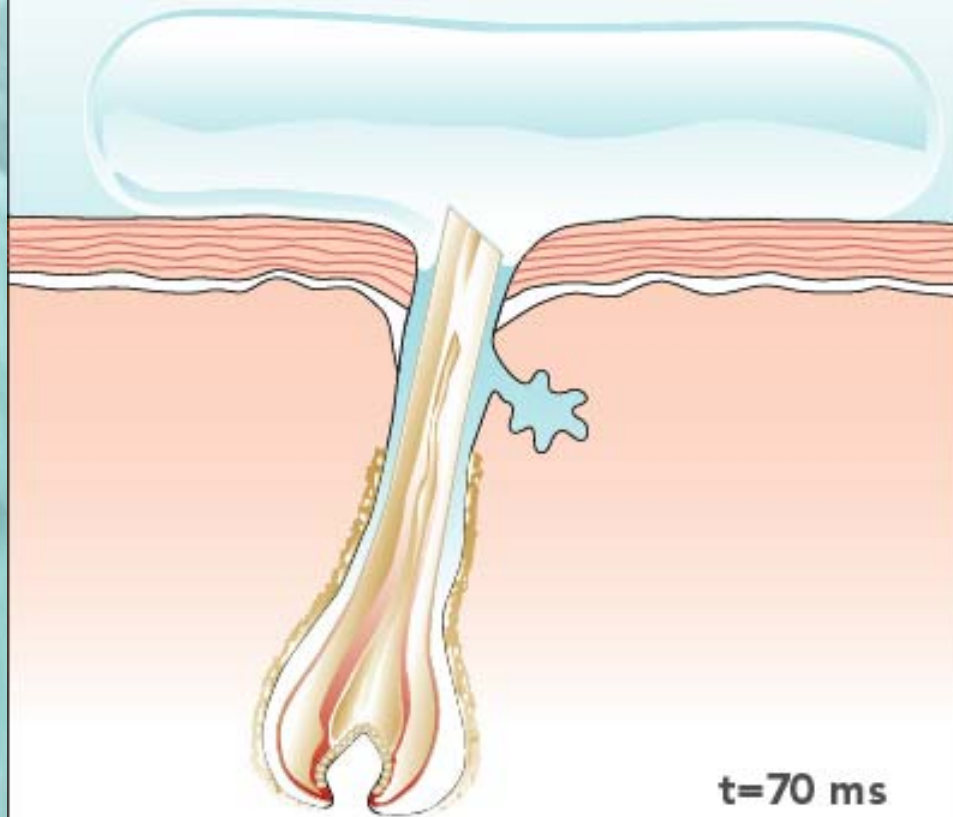


### Step 6: Follicle heats up





**Step 7: Follicle cools**

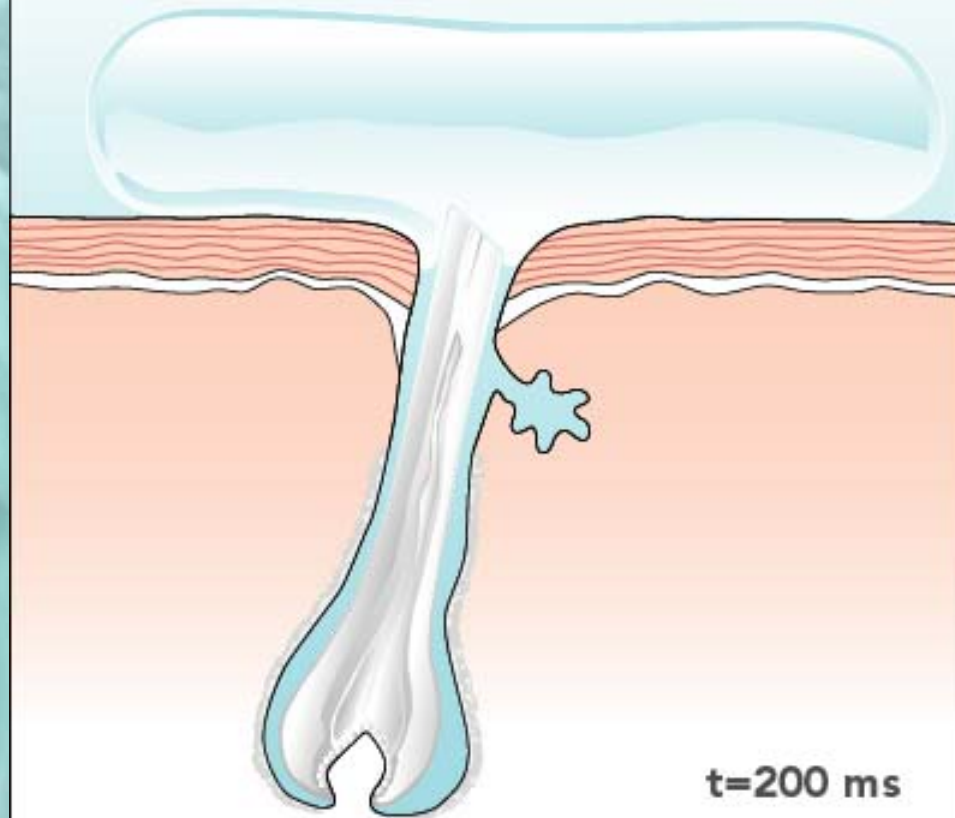


**t=70 ms**



**PLASMALITE**

**Step 8: Dead follicle**



**t=200 ms**



**PLASMALITE**